



**SENIORS IN A CULTURE ROAD OF AWARENESS
VIA THE MODERN AND INTERCULTURAL
DIVERSITY**

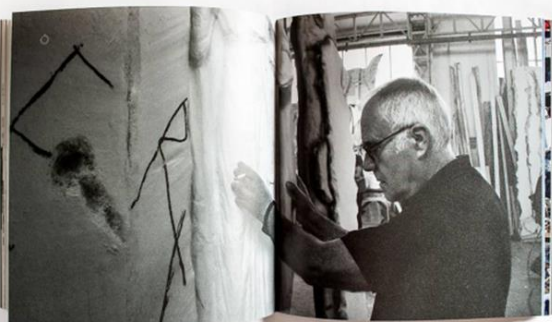
Project N. : 2019-1-EL01-KA204-062518

Meeting in Arezzo – Italy

1- 4 December 2019

MIMMO PALADINO

Arezzo

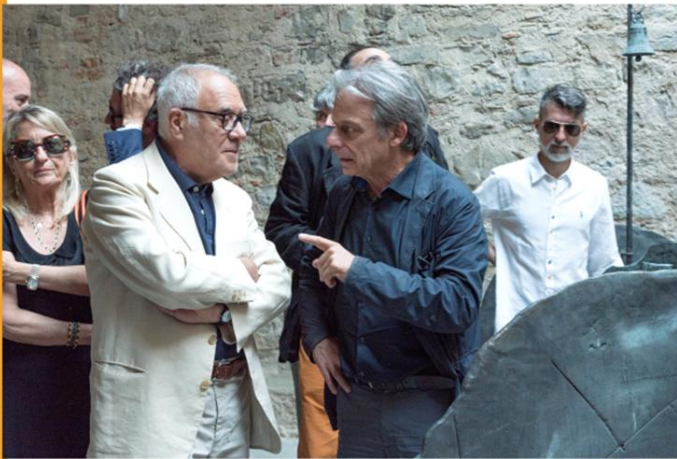


Arezzo is a city of art because it preserves in its civic and urban heritage the vestiges of an important past, but also because it is able to dialogue with the present and its emergencies, moving cultural intensions useful for the development of its social context that projects it into the future.

BIOGRAPHICAL NOTES

Domenico (Mimmo) Paladino was born in Paduli (near Benevento) 1948. In the early seventies he focused on drawing, introducing mythological subjects that later acquired a role of fundamental importance in his art. His works are based on a wide range of archaeological, mythological and stylistic sources including Egyptian, Etruscan, Greco-Roman, early Christian and Romanesque art.

Paladino worked with a wide range of expressive means: drawing, painting, sculpture and various engraving techniques. In the 70s he created monochrome paintings which he combined with geometric elements and salvaged objects, such as wigs and masks. Around 1983 he began to apply sculptures in wood to the canvases.



Then he began to recreate his archaic bronze characters with colored patinas, and to carve wood and stone to create totemic objects, masks and truncated figures of animals and men. His artistic production uses all techniques, blurring the distinction between sculpture and painting, opening a dialogue between traditional and minimalist ways of artistic representation. At the 1980 Venice Biennale the art critic A. Bonito Oliva inserted him into a group of Italian artists called Transavanguardia. Paladino has held numerous exhibitions throughout Europe, in North and South America and in the East.



THE RULE OF PIERO EXHIBITION

Piero della Francesca was, at his time, a great innovator of the pictorial language, elaborating a system of spatial representation based on the modulation of light and color to suggest effects in depth, so Mimmo Paladino, in his turn, in contemporary times, has tried to renew the Italian artistic tradition, reviving the practices of painting and sculpting (overshadowed since the 70s by conceptual art), re-evaluating the art of the past from any age and from any country.



Mimmo Paladino always admired Piero della Francesca' art and was inspired in some of his works. Paladino updates Piero's perspective representation system, his way of distributing figures in space (his 'rule') by transferring it from the two-dimensionality of the pictorial surface to the three-dimensionality of the physical architectural and urban space.



The Arezzo exhibition aims to highlight the influence that Piero Della Francesca left in the development of the art of the master from Benevento. Likewise, a striking link exists between the city's historical and artistic heritage, with contemporary languages, materializing an ideal bridge between two Italian masters who proposed themselves to critics as two great innovators, albeit in different eras.

The Mimmo Paladino exhibition in Arezzo is presented in the following places in the city:

- Modern Art Gallery in S. Francesco Square
- St. Ignatius Church
- St. Domenico Church
- Medicea Fortress
- Gate Stufi

S. FRANCESCO SQUARE



THE OBELISK IS INSPIRED BY THE "GIGLI DI NOLA" PROCESSIONAL MACHINES. TODAY PART OF THE UNESCO HERITAGE AND IT IS FORMED BY ASSEMBLED NUMBERS. A TEMPORARY MONUMENT TO MATHEMATICS. THE WORK IS MORE THAN 20 METERS TALL.



Entrance To the Exhibition



Metal shoes Installation



The Dream of Constantine



Fresco by Piero della Francesca (Bacci chapel)

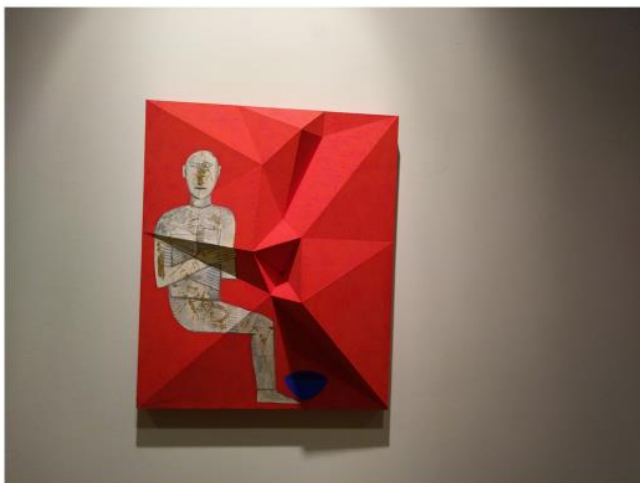


Coloured bronze sculpture











THE BIG CROSS in gold foil Untitled (2016) a respectful tribute To CIMABUE's youth masterpiece in the church of S.Domenico



S.Domenico Church

Crucifix (336x267 cm)
by Cimabue, dating
from around 1268-1271



- The installation entitled **DORMIENTI** among the most famous works by Paladino created in 1999 for the Roundhouse in London and here reproduced in its entirety in the deconsecrated church of S. Ignazio





Bronze helmet



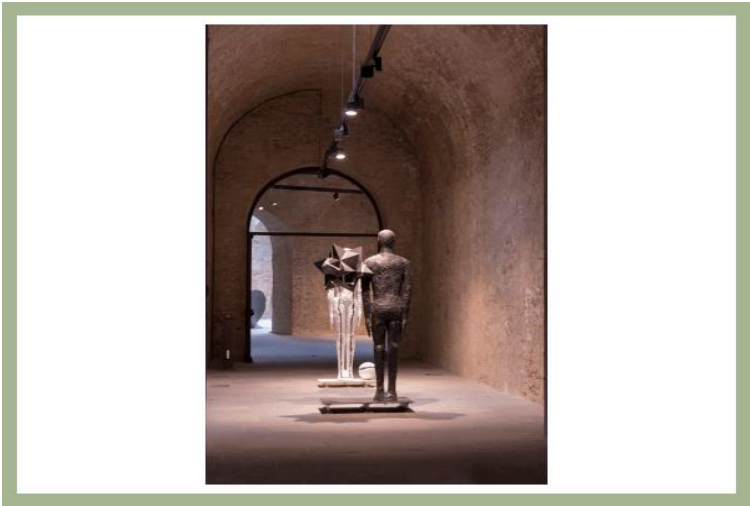
It seems to point out an ancient trophy left on the pavement, it is Elmo, one of the artist's most famous work, a bronze exhibited in the major museums of the world from 1998, which here welcomes visitors arriving or departing recalling the glories of an ancient past.

Medicea fortress entrance











You can see Mr. Paladino, the man with the white jacket.



Mimmo Paladino, the famous artist, was asked to leave one of his work in Arezzo.

He prepared the "GOLD SPEAR", an important prize to the winner of GIOSTRA DEL SARACINO, a Medieval tournament between knights who must fight against a target representing a Saracen warrior. The Competition takes place every year in Arezzo.

This prize is jealously preserved for future generations.

The spear delivered to the city



On the sides of the handle of the spear by Paladino, there are sculptures dedicated to Leonardo Da Vinci.





Saracino tournament in
Piazza Grande



Knights in action



The prize for the winner

